



510

| i | | T2 [Nm] | | | | | | n1 max | T2 max | pt |
|--------|--------|---------|-----------|---------|--------|---------|---------|--------|--------|------|
| L | 1/... | n2*h | | | | | | [min] | [Nm] | [Kw] |
| | | 10000 | 25000 | 50000 | 100000 | 500000 | 1000000 | | | |
| | | (10)4 | (2.5*10)4 | (5*10)4 | (10)5 | (5*10)5 | (10)6 | | | |
| L1 | 3.40 | 5540 | 5220 | 5070 | 4950 | 4200 | 3400 | 2000 | 6500 | 21 |
| | 4.00 | 6270 | 5800 | 5270 | 4630 | 4130 | 3360 | | | |
| | 5.00 | 5370 | 4460 | 3870 | 3540 | 3200 | 3070 | | | |
| | 5.80 | 4700 | 3900 | 3400 | 3180 | 2880 | 2760 | | | |
| | 7.00 | 3640 | 3010 | 2640 | 2530 | 2290 | 2200 | | | |
| L2 | 11.56 | 5540 | 5220 | 5070 | 4950 | 4200 | 3400 | 2000 | 6500 | 12 |
| | 13.60 | 5540 | 5220 | 5070 | 4950 | 4200 | 3400 | | | |
| | 16.00 | 6270 | 5800 | 5270 | 4630 | 4130 | 3360 | | | |
| | 17.00 | 5540 | 5220 | 5070 | 4950 | 4200 | 3400 | | | |
| | 19.72 | 5540 | 5220 | 5070 | 4950 | 4200 | 3400 | | | |
| | 20.00 | 6270 | 5800 | 5270 | 4630 | 4130 | 3360 | | | |
| | 23.20 | 6270 | 5800 | 5270 | 4630 | 4130 | 3360 | | | |
| | 23.80 | 5540 | 5220 | 5070 | 4950 | 4200 | 3400 | | | |
| | 25.00 | 5370 | 4460 | 3870 | 3540 | 3200 | 3070 | | | |
| | 28.00 | 6270 | 5800 | 5270 | 4630 | 4130 | 3360 | | | |
| | 29.00 | 4700 | 3900 | 3400 | 3180 | 2880 | 2760 | | | |
| | 29.00 | 5370 | 4460 | 3870 | 3540 | 3200 | 3070 | | | |
| | 33.64 | 4700 | 3900 | 3400 | 3180 | 2880 | 2760 | | | |
| | 35.00 | 5370 | 4460 | 3870 | 3540 | 3200 | 3070 | | | |
| | 35.00 | 3640 | 3010 | 2640 | 2530 | 2290 | 2200 | | | |
| 40.60 | 4700 | 3900 | 3400 | 3180 | 2880 | 2760 | | | | |
| 49.00 | 3640 | 3010 | 2640 | 2530 | 2290 | 2200 | | | | |
| L3 | 51.33 | 5540 | 5220 | 5070 | 4950 | 4200 | 3400 | 2000 | 6500 | 9 |
| | 55.76 | 5540 | 5220 | 5070 | 4950 | 4200 | 3400 | | | |
| | 60.38 | 5540 | 5220 | 5070 | 4950 | 4200 | 3400 | | | |
| | 62.66 | 5540 | 5220 | 5070 | 4950 | 4200 | 3400 | | | |
| | 65.60 | 6270 | 5800 | 5270 | 4630 | 4130 | 3360 | | | |
| | 71.04 | 6270 | 5800 | 5270 | 4630 | 4130 | 3360 | | | |
| | 73.71 | 5540 | 5220 | 5070 | 4950 | 4200 | 3400 | | | |
| | 83.23 | 5540 | 5220 | 5070 | 4950 | 4200 | 3400 | | | |
| | 86.72 | 6270 | 5800 | 5270 | 4630 | 4130 | 3360 | | | |
| | 92.14 | 5540 | 5220 | 5070 | 4950 | 4200 | 3400 | | | |
| | 97.92 | 5540 | 5220 | 5070 | 4950 | 4200 | 3400 | | | |
| | 106.88 | 5540 | 5220 | 5070 | 4950 | 4200 | 3400 | | | |
| | 108.40 | 6270 | 5800 | 5270 | 4630 | 4130 | 3360 | | | |
| 115.20 | 6270 | 5800 | 5270 | 4630 | 4130 | 3360 | | | | |



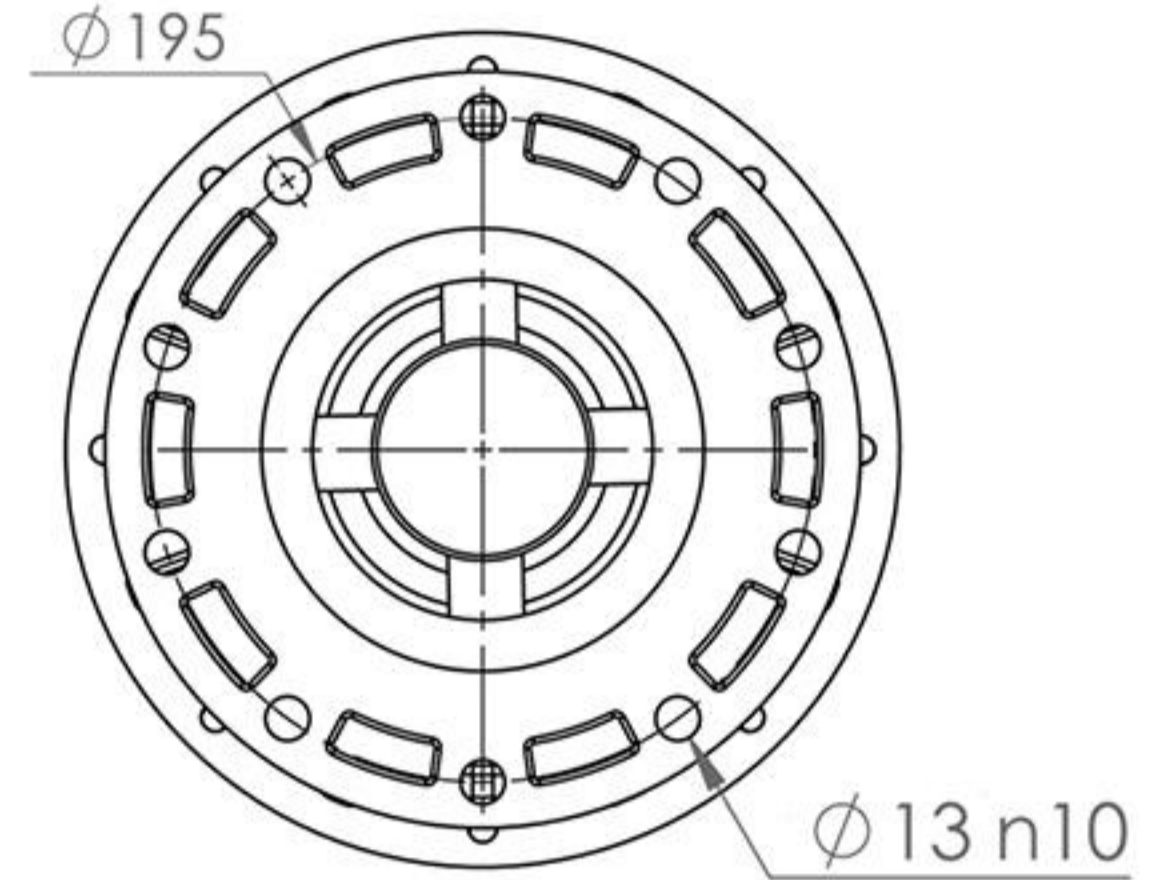
510

| L | i | T2 [Nm] | | | | | | n1 max [min] | T2 max [Nm] | pt [Kw] |
|---------|---------|---------|-----------|---------|--------|---------|---------|-----------------|----------------|------------|
| | | n2*h | | | | | | | | |
| L3 | 1/... | 10000 | 25000 | 50000 | 100000 | 500000 | 1000000 | 2000 | 6500 | 9 |
| | | (10)4 | (2.5*10)4 | (5*10)4 | (10)5 | (5*10)5 | (10)6 | | | |
| L3 | 122.40 | 5540 | 5220 | 5070 | 4950 | 4200 | 3400 | 2000 | 6500 | 9 |
| | 125.74 | 6270 | 5800 | 5270 | 4630 | 4130 | 3360 | | | |
| | 135.50 | 5370 | 4460 | 3870 | 3540 | 3200 | 3070 | | | |
| | 141.98 | 5540 | 5220 | 5070 | 4950 | 4200 | 3400 | | | |
| | 144.00 | 6270 | 5800 | 5270 | 4630 | 4130 | 3360 | | | |
| | 157.18 | 5370 | 4460 | 3870 | 3540 | 3200 | 3070 | | | |
| | 167.04 | 6270 | 5800 | 5270 | 4630 | 4130 | 3360 | | | |
| | 171.36 | 5540 | 5220 | 5070 | 4950 | 4200 | 3400 | | | |
| | 180.00 | 5370 | 4460 | 3870 | 3540 | 3200 | 3070 | | | |
| | 201.60 | 6270 | 5800 | 5270 | 4630 | 4130 | 3360 | | | |
| | 208.80 | 5370 | 4460 | 3870 | 3540 | 3200 | 3070 | | | |
| | 242.21 | 4700 | 3900 | 3400 | 3180 | 2880 | 2760 | | | |
| | 252.00 | 5370 | 4460 | 3870 | 3540 | 3200 | 3070 | | | |
| | 292.32 | 4700 | 3900 | 3400 | 3180 | 2880 | 2760 | | | |
| 352.80 | 3640 | 3010 | 2640 | 2530 | 2290 | 2200 | | | | |
| L4 | 346.27 | 6270 | 5800 | 5270 | 4630 | 4130 | 3360 | 2000 | 6500 | 8 |
| | 374.98 | 6270 | 5800 | 5270 | 4630 | 4130 | 3360 | | | |
| | 389.09 | 5540 | 5220 | 5070 | 4950 | 4200 | 3400 | | | |
| | 457.75 | 6270 | 5800 | 5270 | 4630 | 4130 | 3360 | | | |
| | 572.19 | 5370 | 4460 | 3870 | 3540 | 3200 | 3070 | | | |
| | 663.74 | 4700 | 3900 | 3400 | 3180 | 2880 | 2760 | | | |
| | 715.39 | 6270 | 5800 | 5270 | 4630 | 4130 | 3360 | | | |
| | 894.24 | 6270 | 5800 | 5270 | 4630 | 4130 | 3360 | | | |
| | 1037.32 | 6270 | 5800 | 5270 | 4630 | 4130 | 3360 | | | |
| | 1064.15 | 5540 | 5220 | 5070 | 4950 | 4200 | 3400 | | | |
| | 1117.80 | 5370 | 4460 | 3870 | 3540 | 3200 | 3070 | | | |
| | 1296.65 | 5370 | 4460 | 3870 | 3540 | 3200 | 3070 | | | |
| | 1564.92 | 5370 | 4460 | 3870 | 3540 | 3200 | 3360 | | | |
| | 1815.31 | 4700 | 3900 | 3400 | 3180 | 2880 | 2760 | | | |
| 2190.89 | 3640 | 3010 | 2640 | 2530 | 2290 | 2200 | | | | |

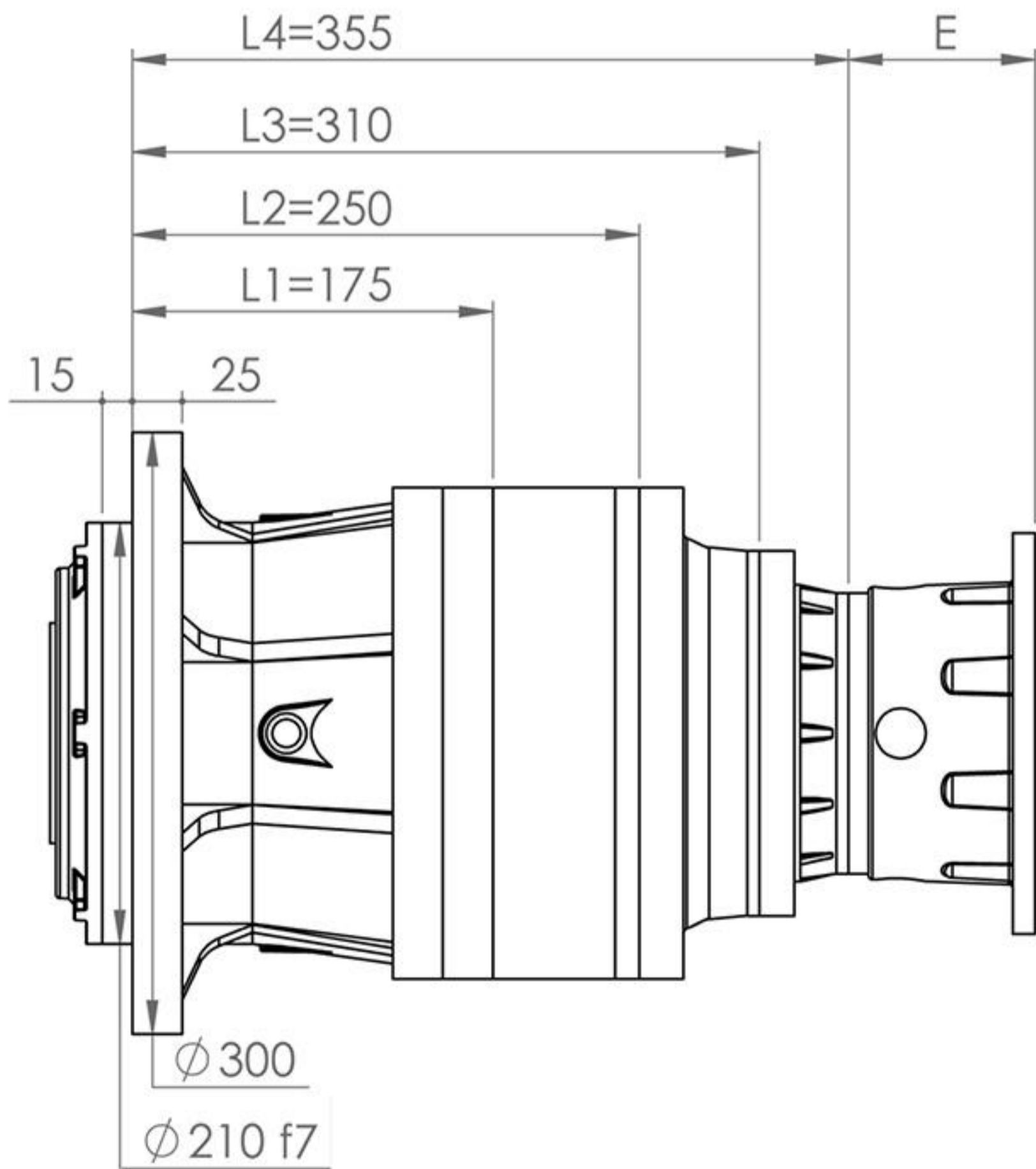
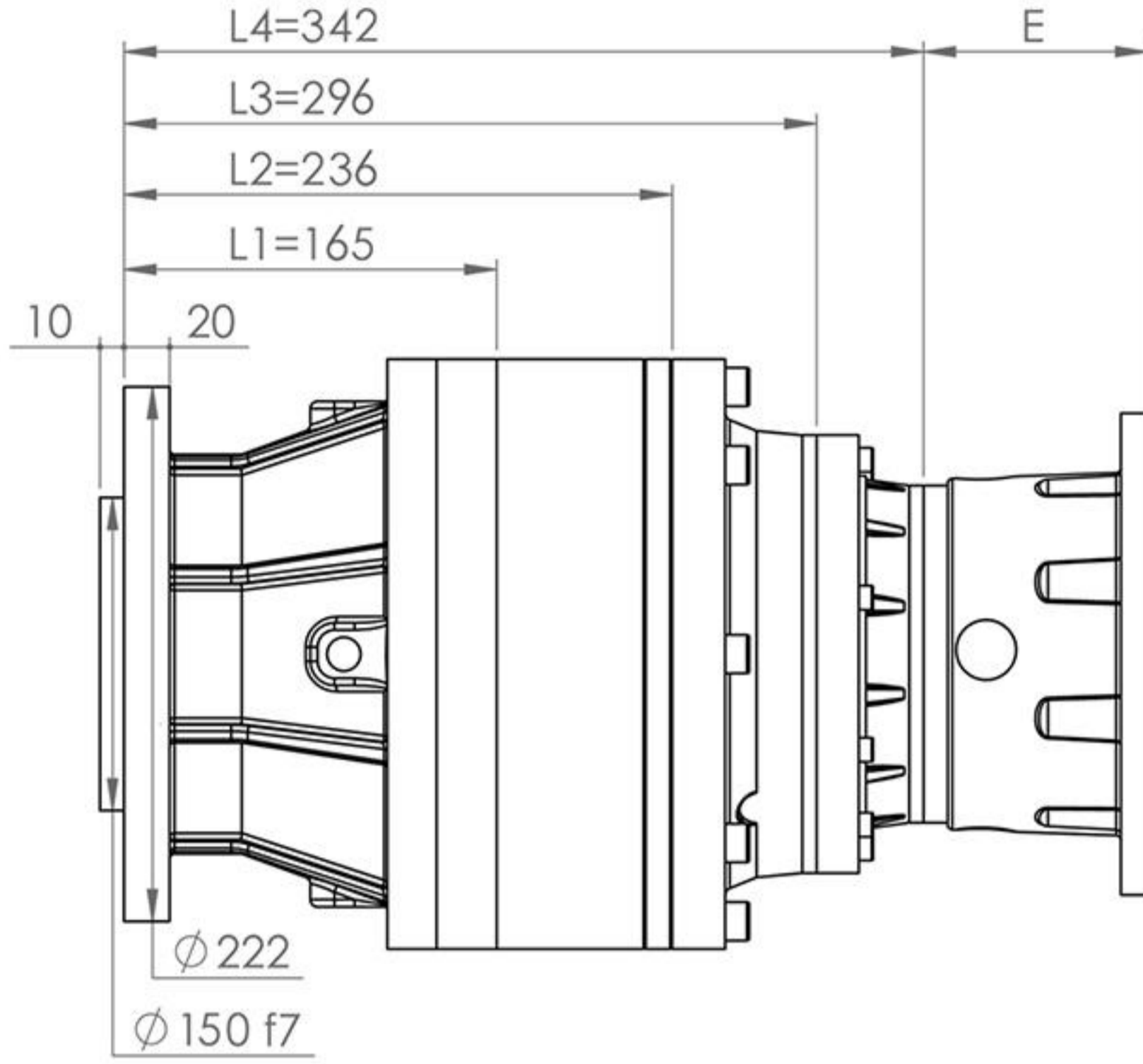
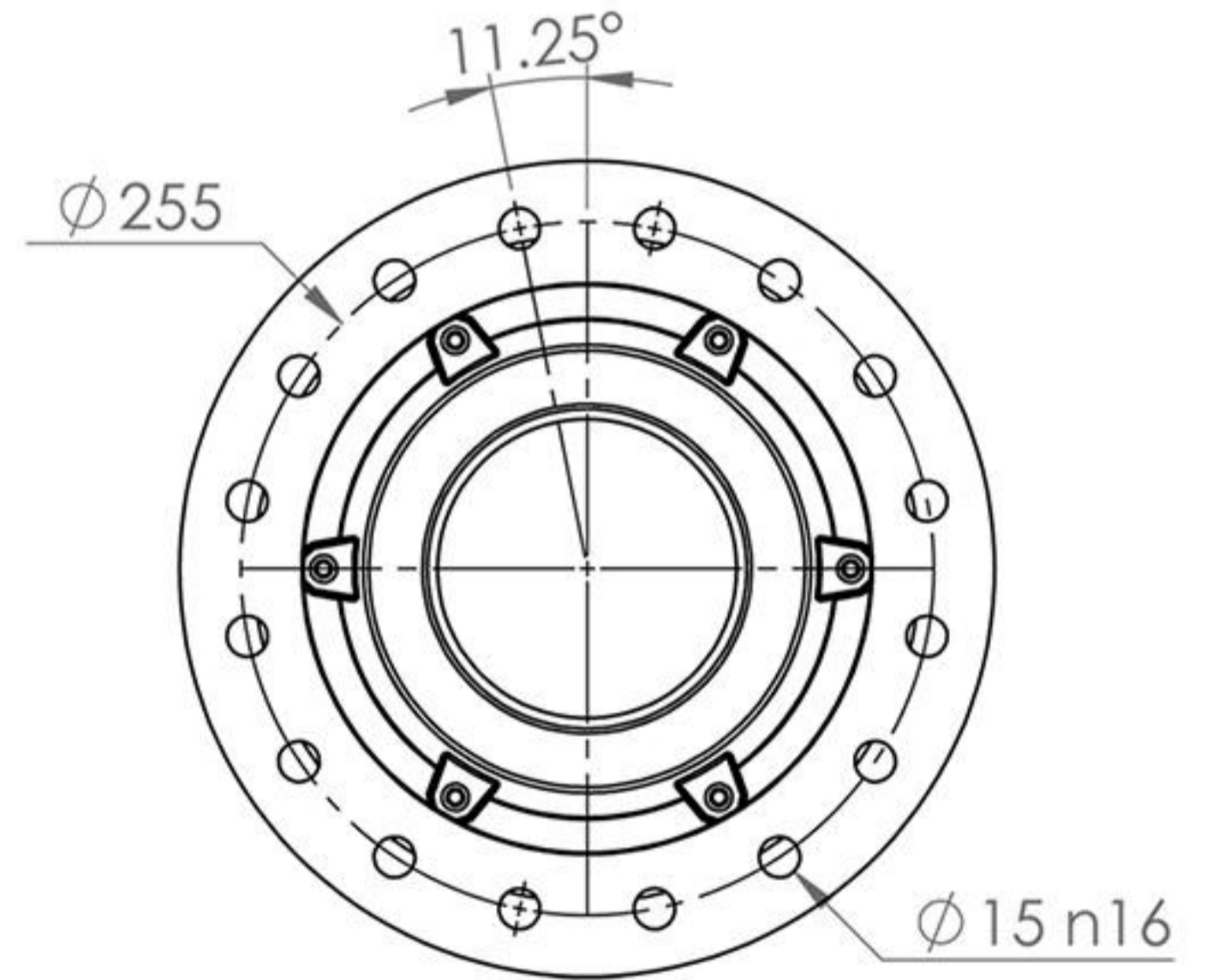


SH 510

Output Flange Dimensions



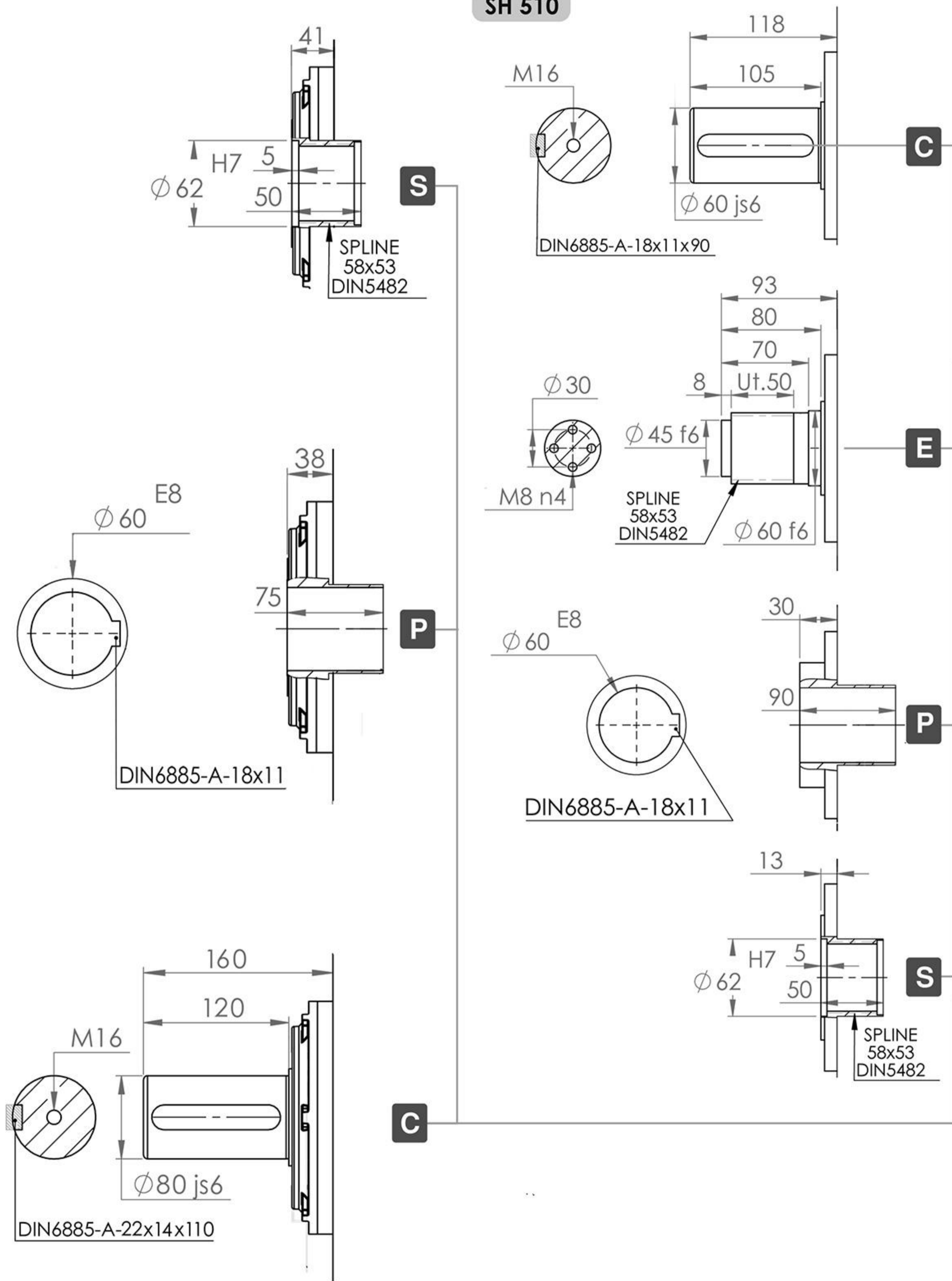
Output Flange Dimensions



| MOTOR FRAME | 80-4A | 90LA | 90LB | 100LA | 100LB | 112M | 132MA | 132MB | 160LA | 160LB | 180M | 180L | 200L | 225S |
|-------------|-------|------|------|-------|-------|------|-------|-------|-------|-------|------|------|------|------|
| E | L1 | - | - | - | - | - | - | - | - | - | 177 | 177 | 177 | 207 |
| | L2 | - | - | - | - | - | - | 144 | 177 | 177 | - | - | - | - |
| | L3 | - | 96 | 96 | 117 | 117 | 117 | 132 | 132 | - | - | - | - | - |
| | L4 | 93 | 93 | - | - | - | - | - | - | - | - | - | - | - |

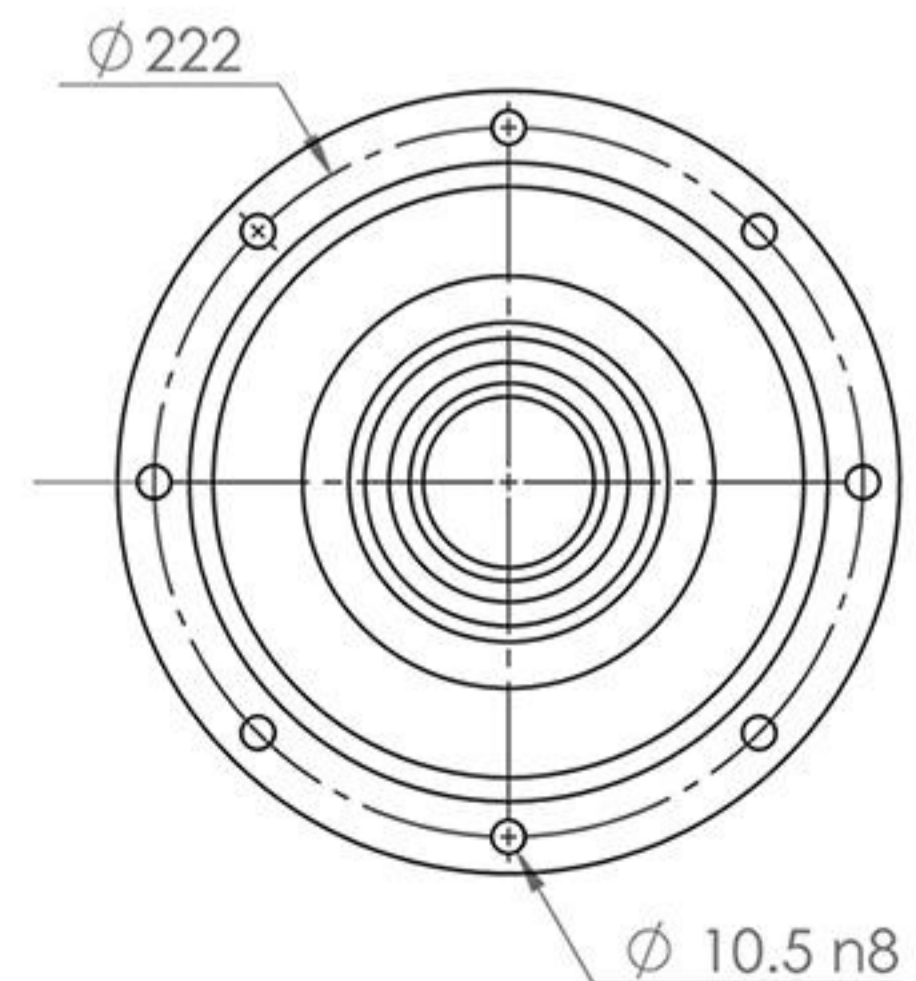
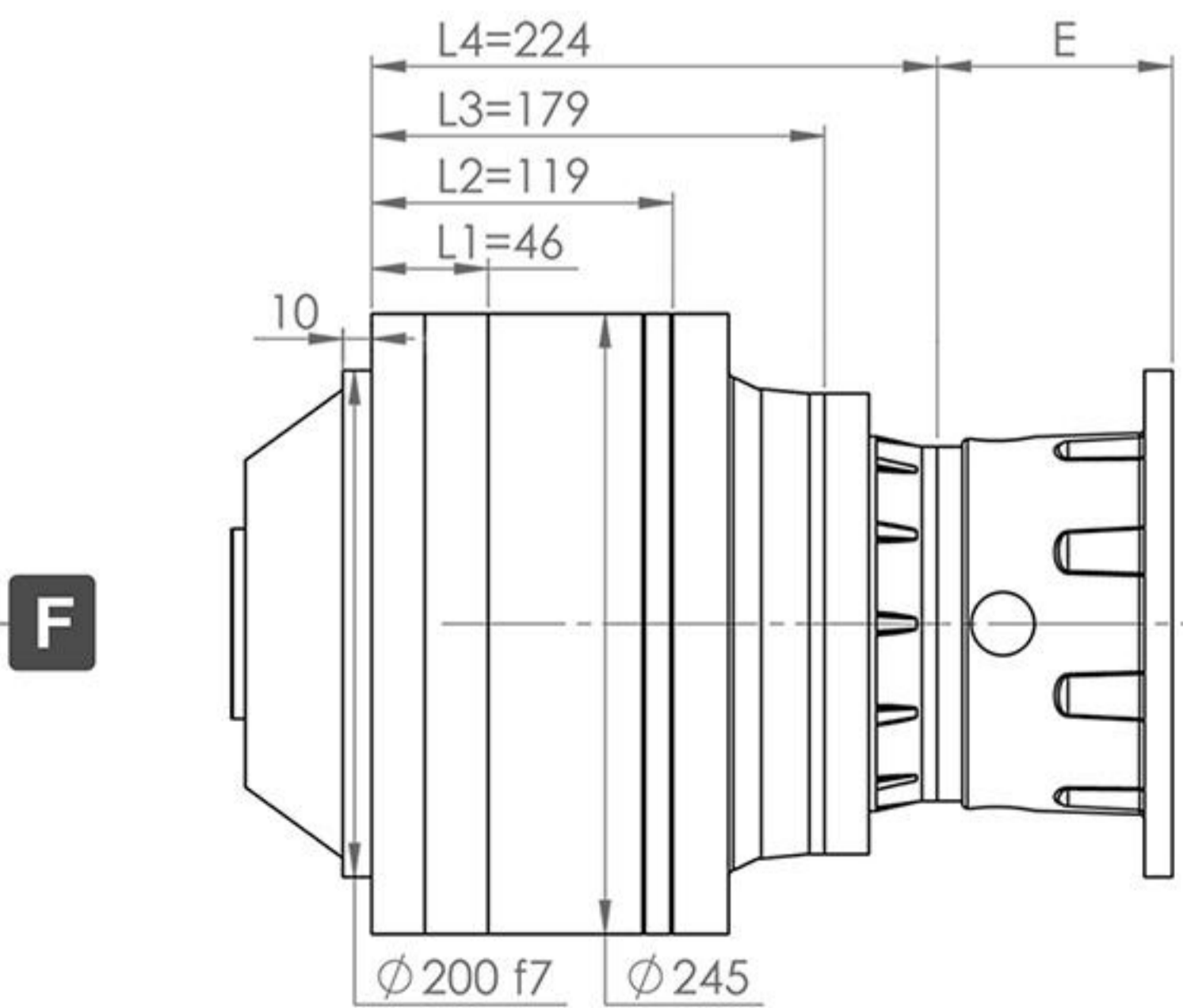
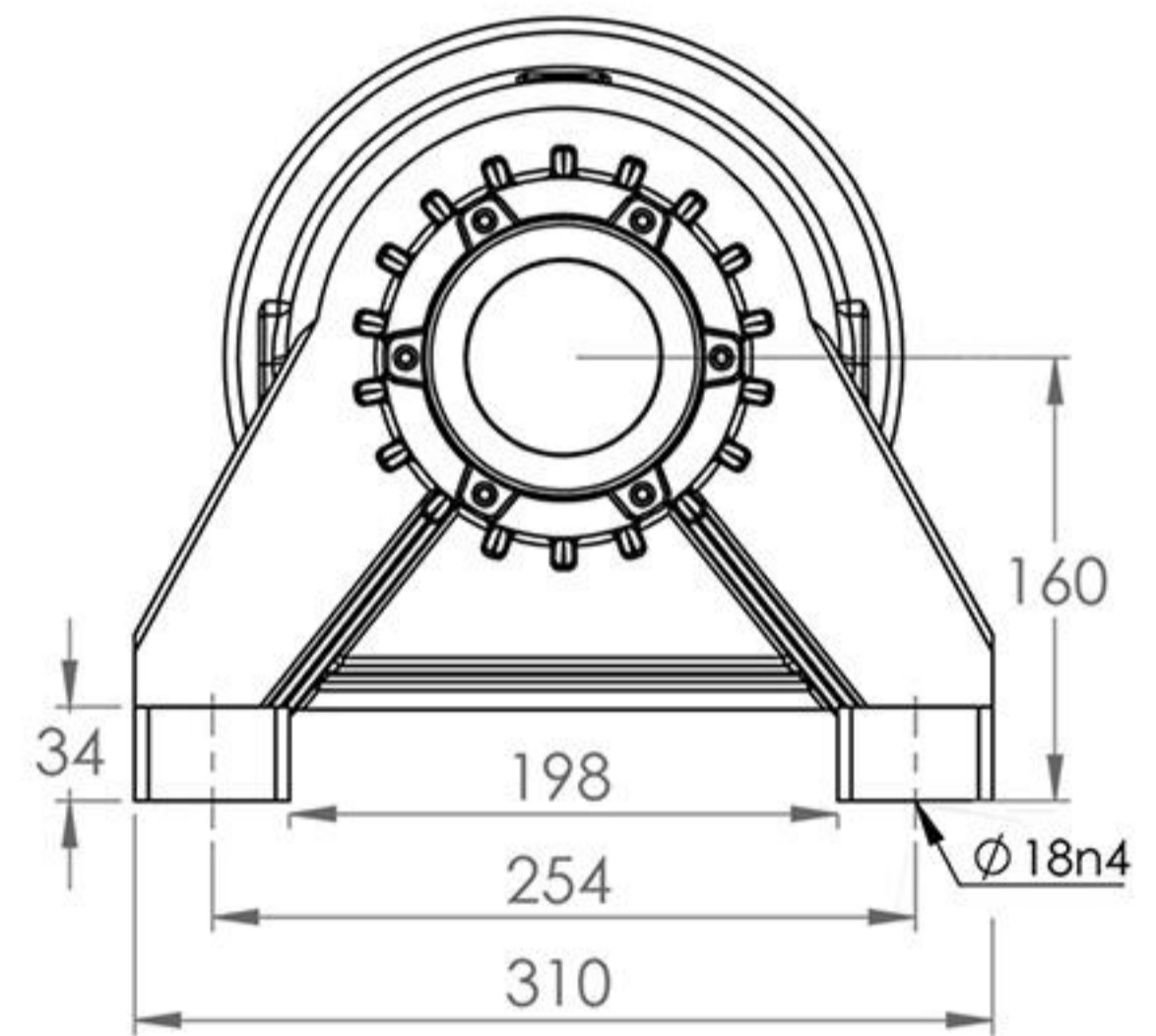
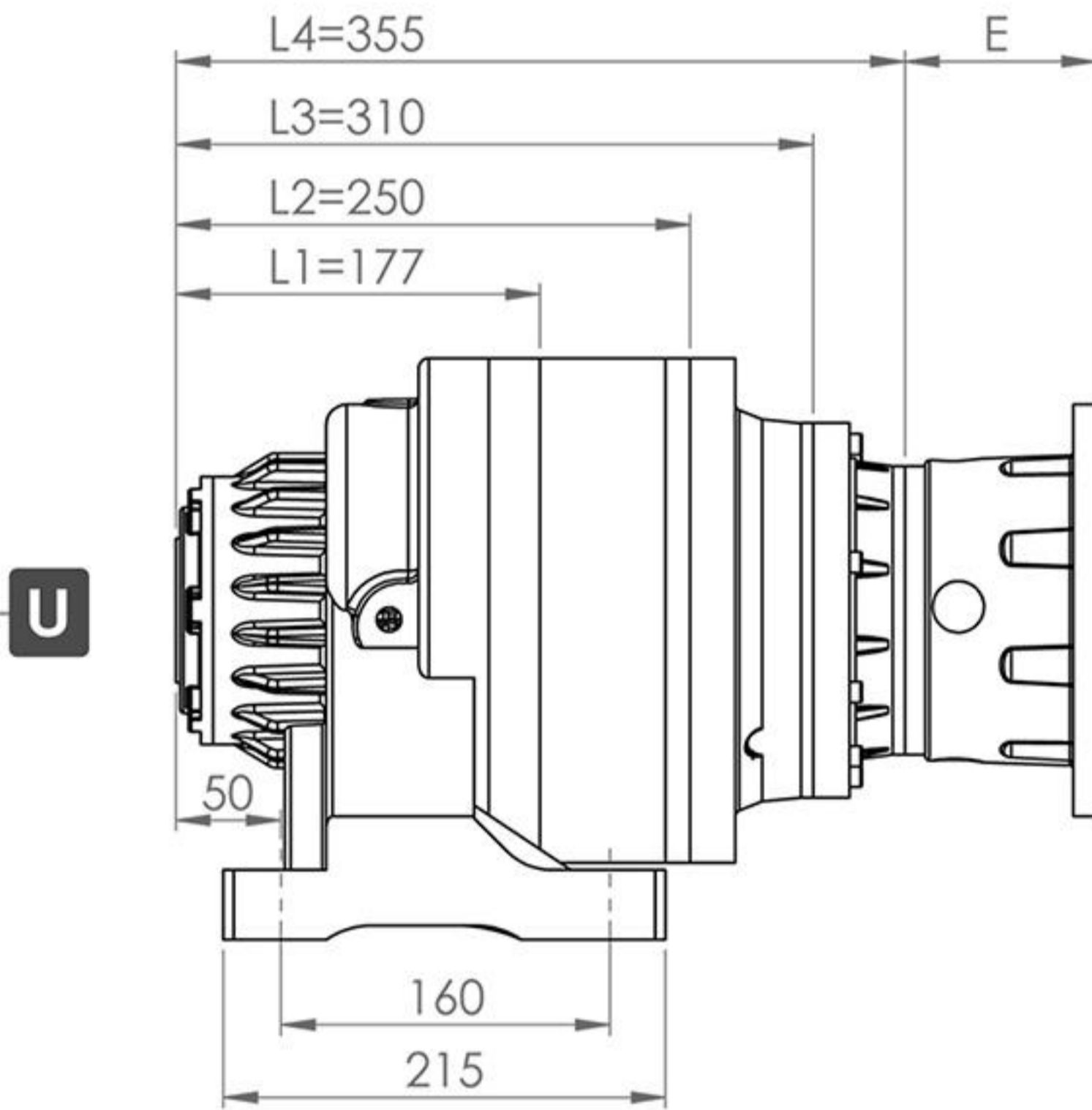
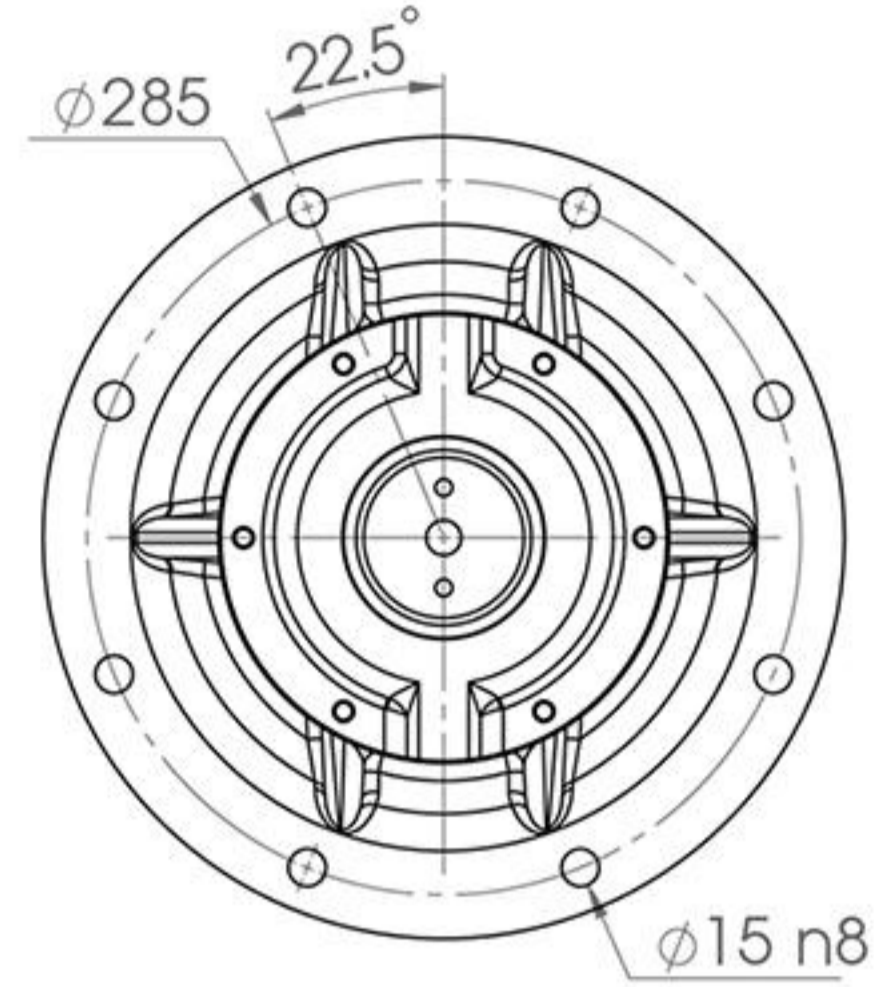
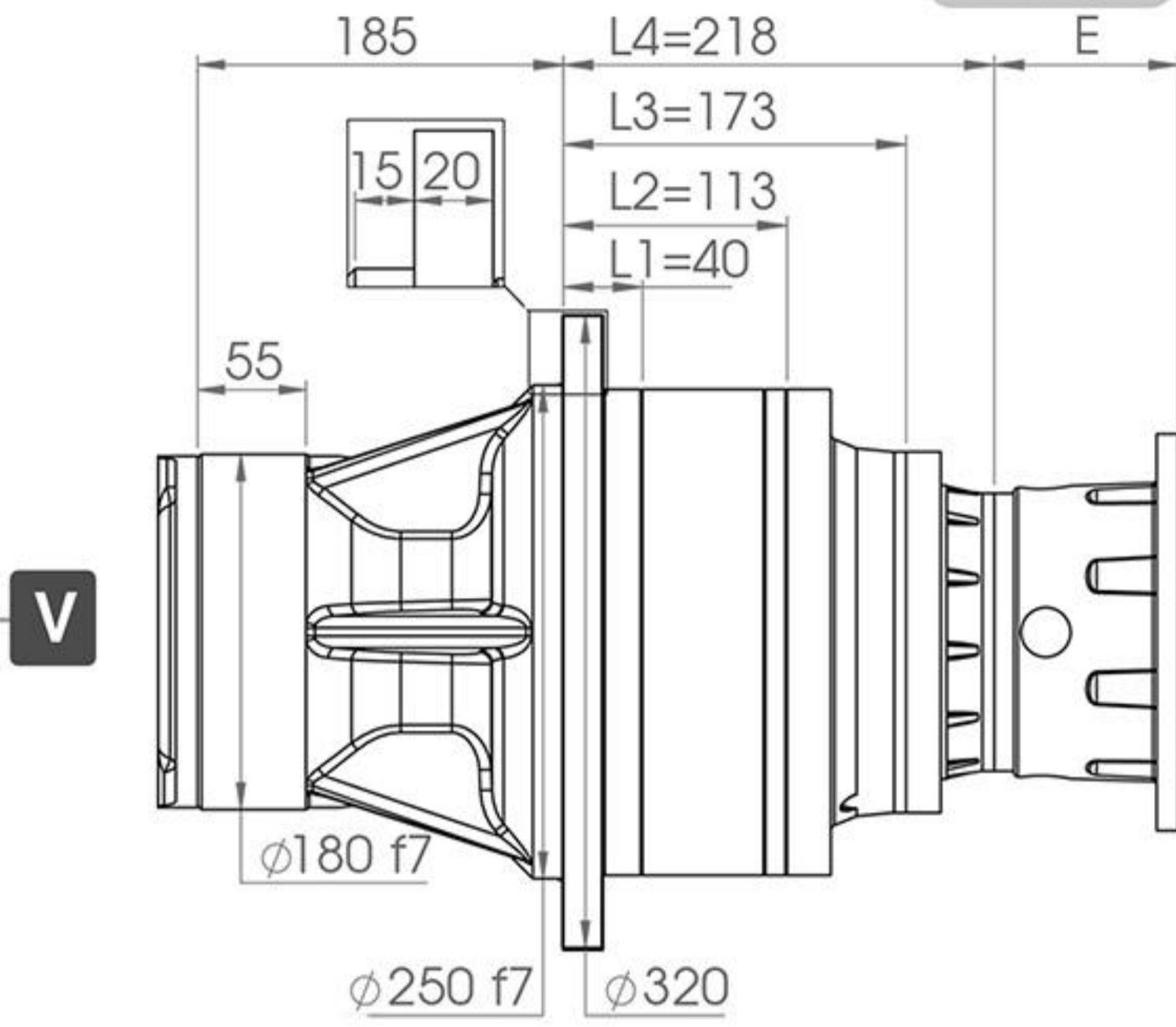


SH 510



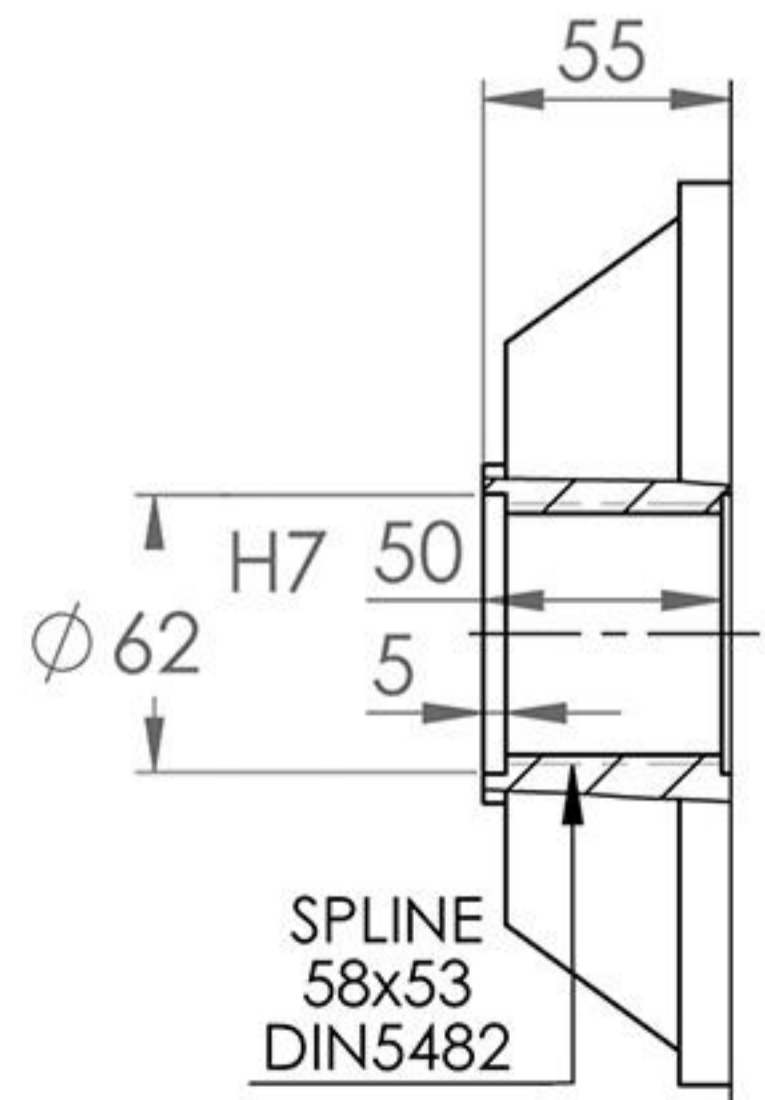
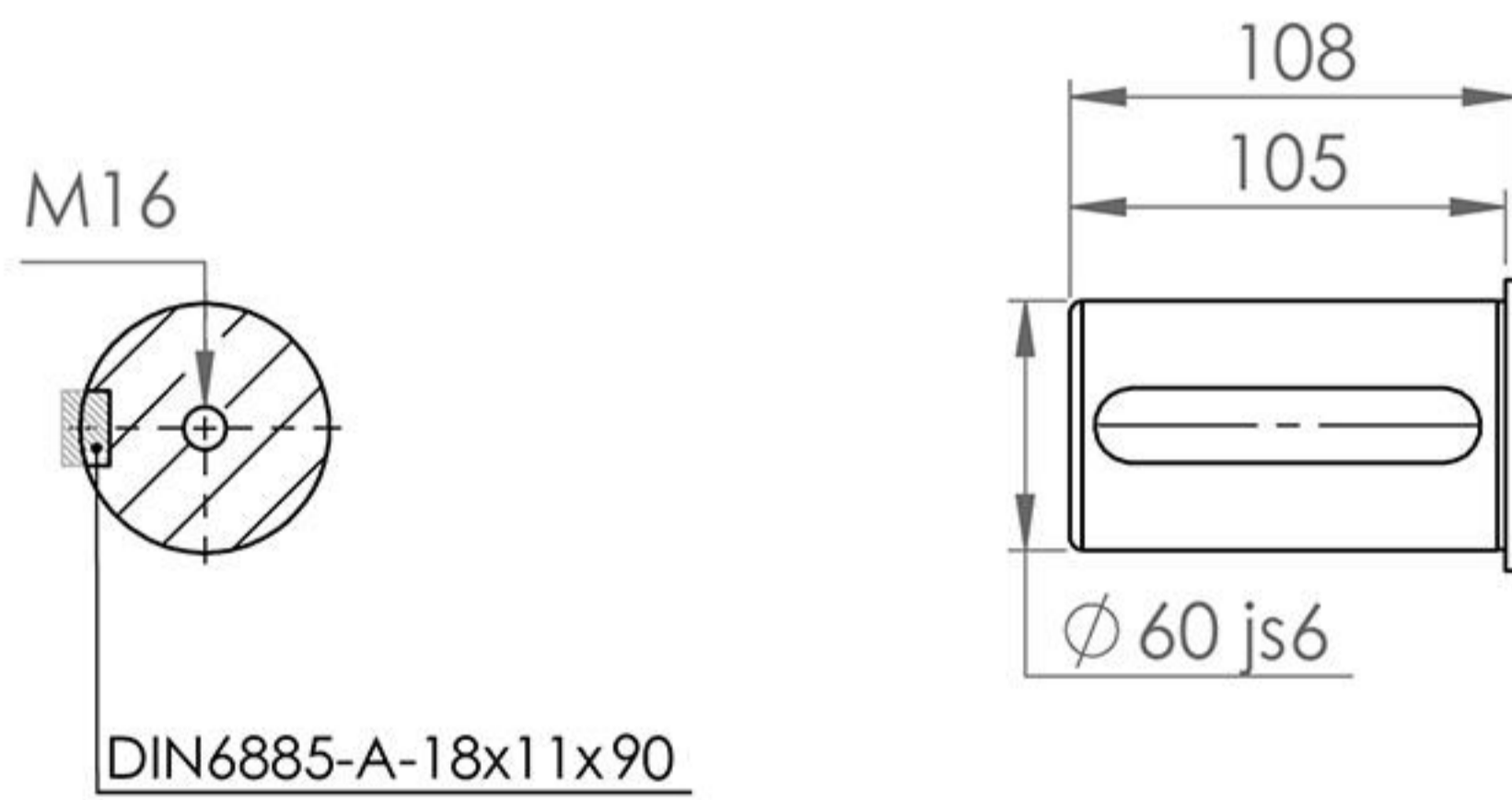
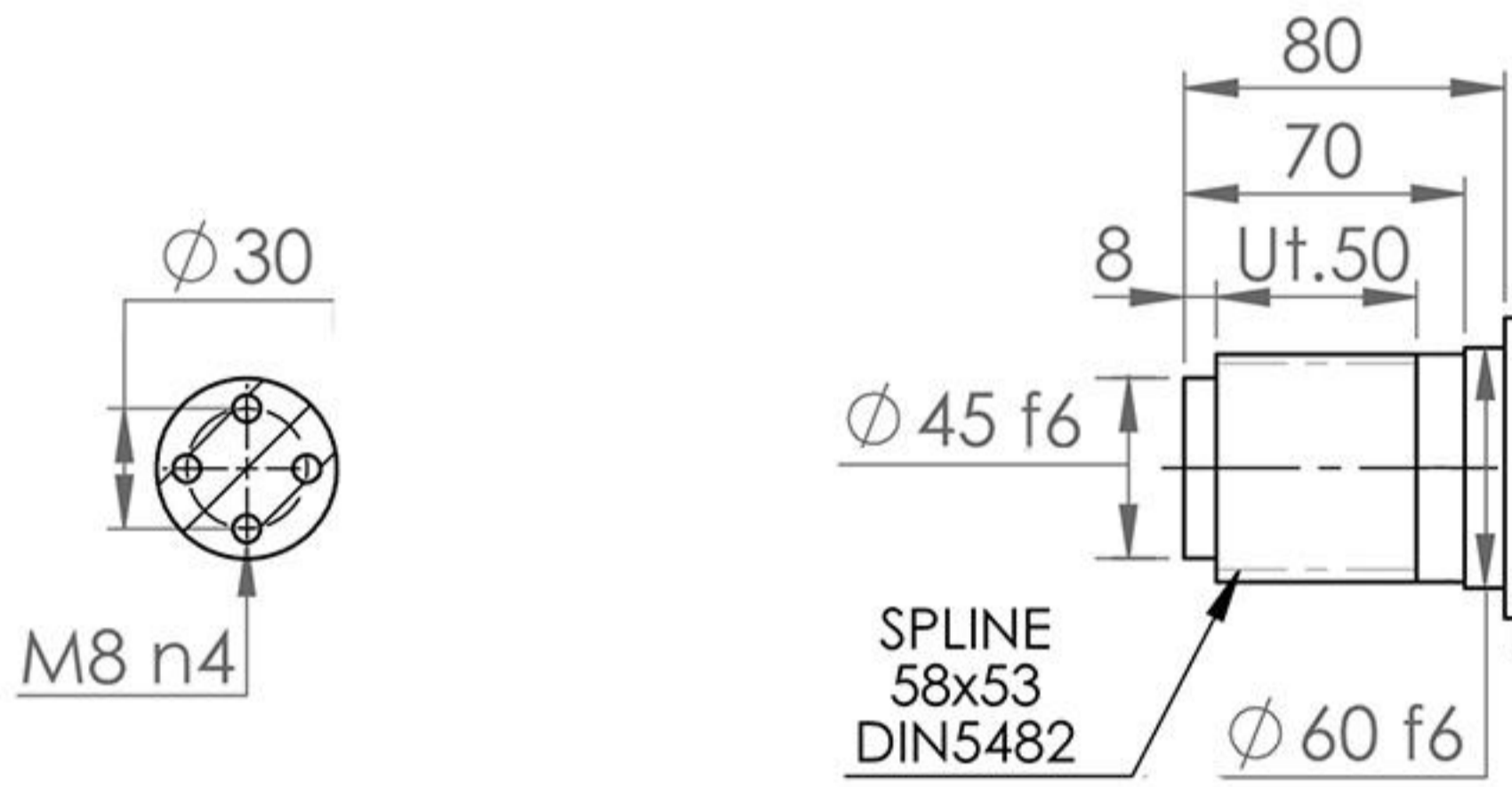
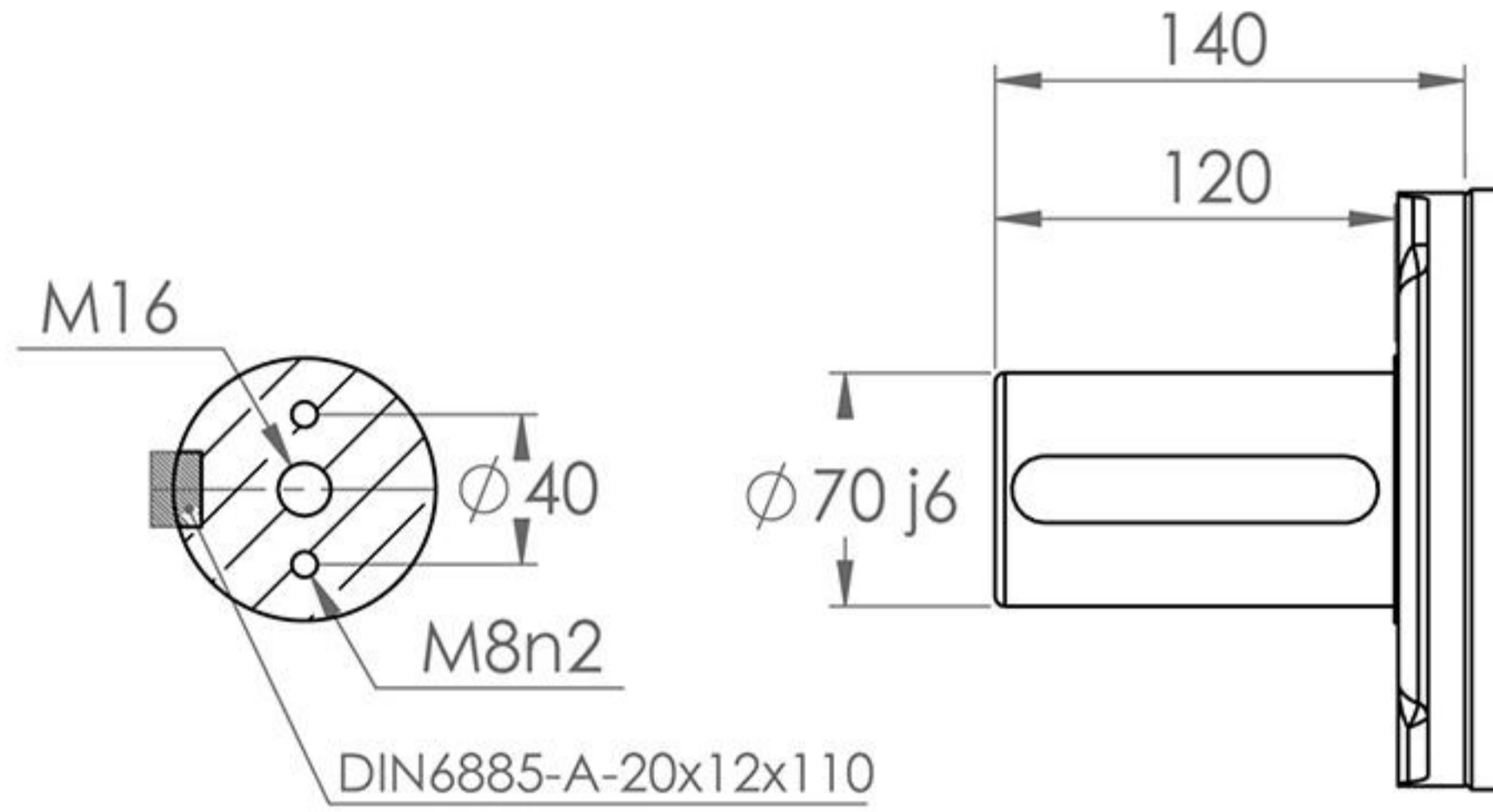


SH 510



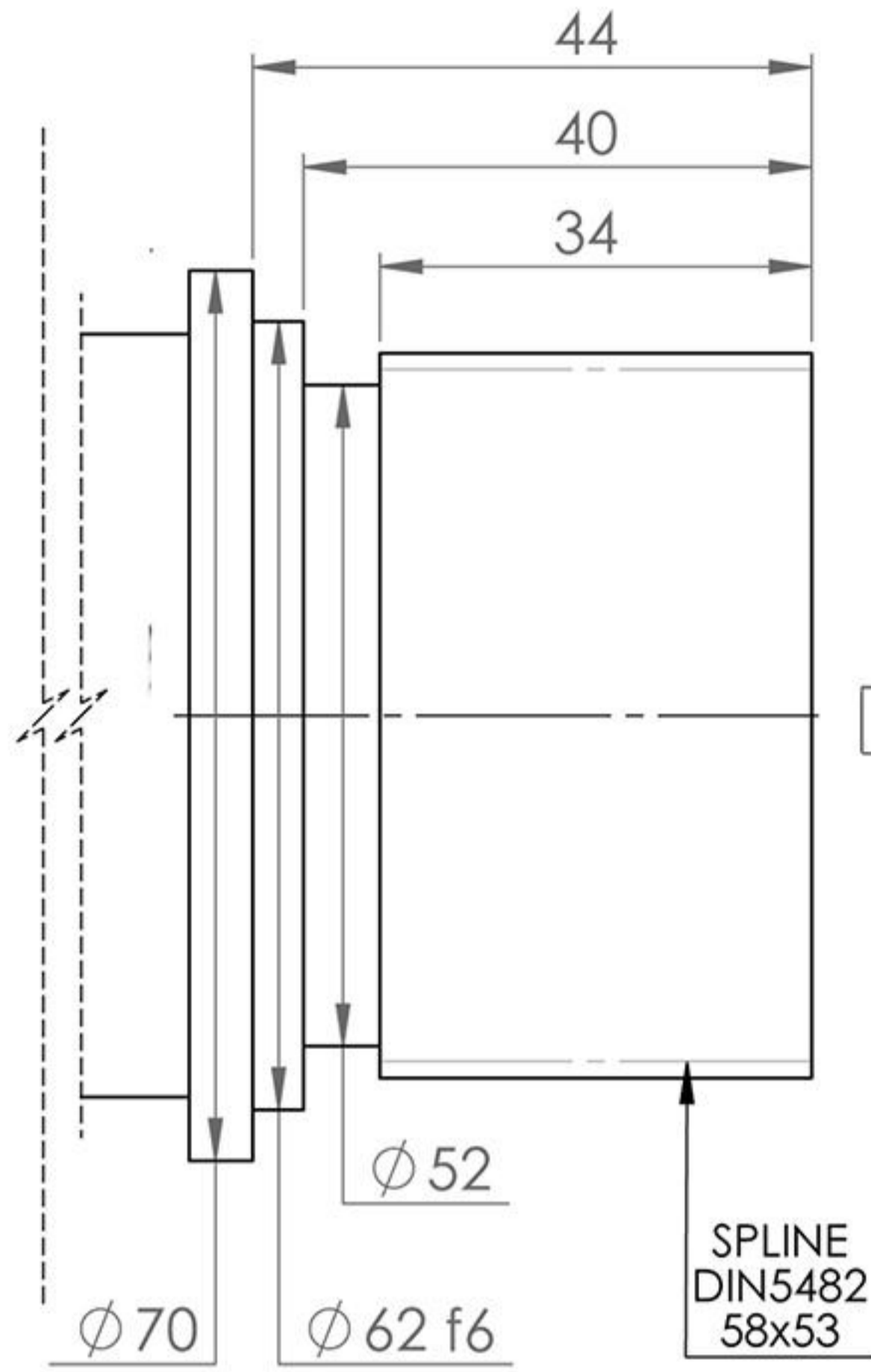


SH 510



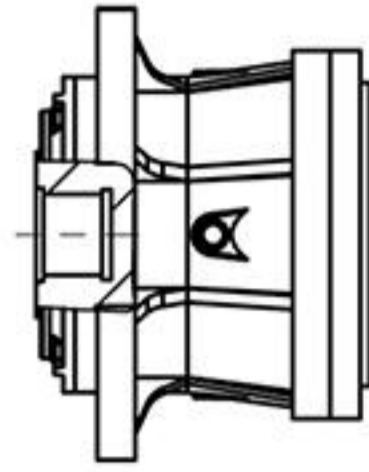


SH 510

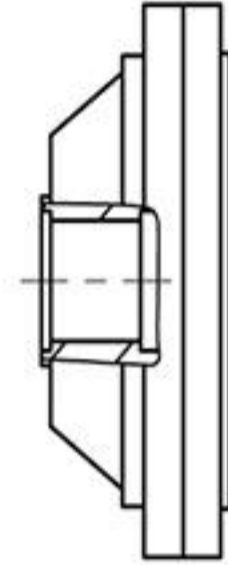


Saft S(E)510

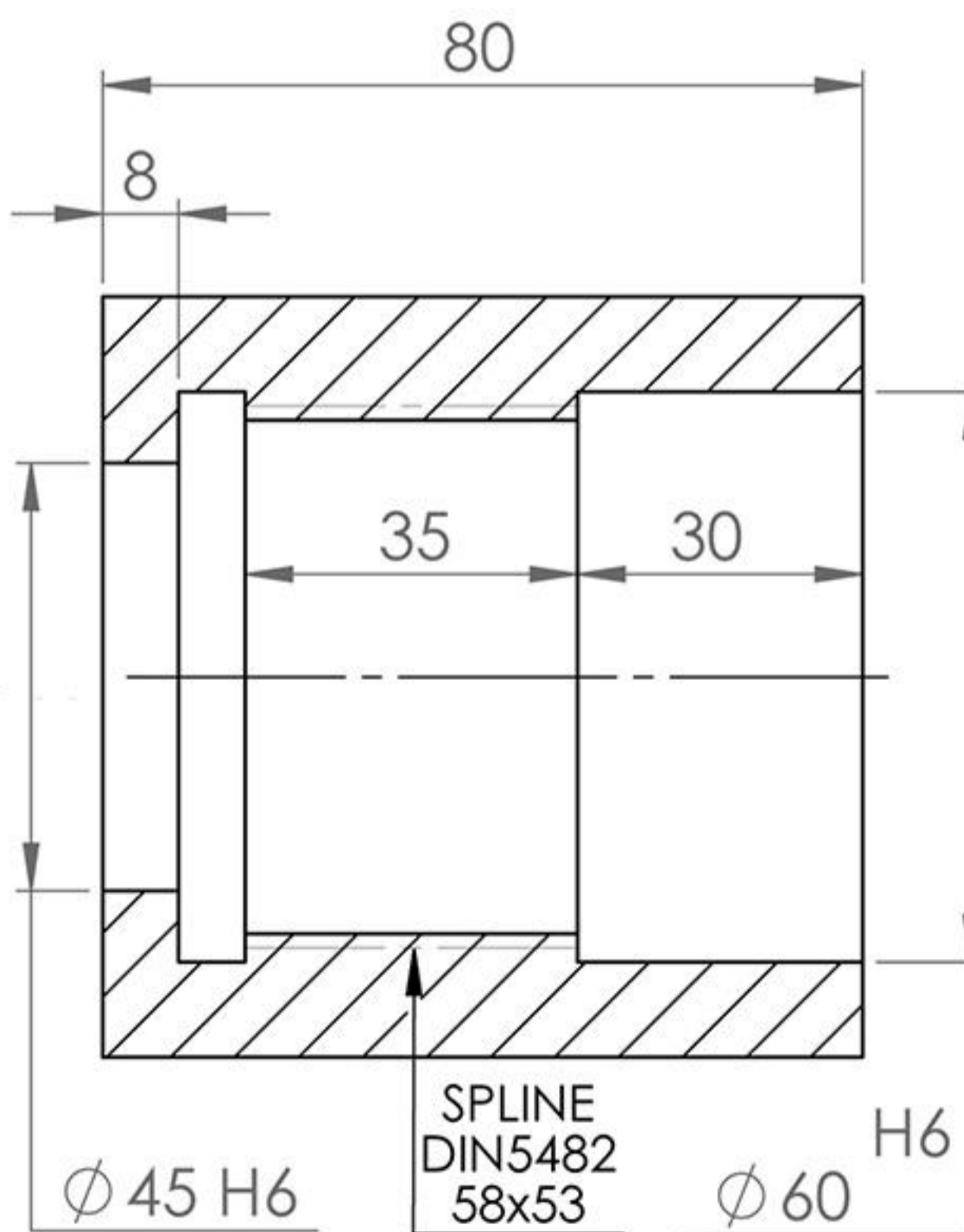
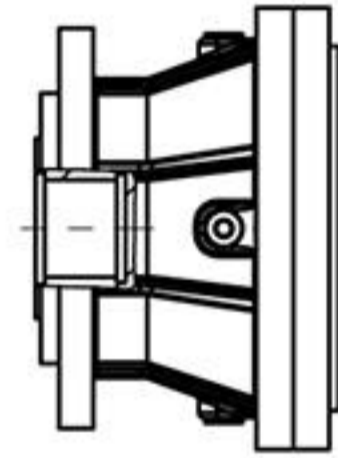
SH 510 ... PS



SH 510 ... FS

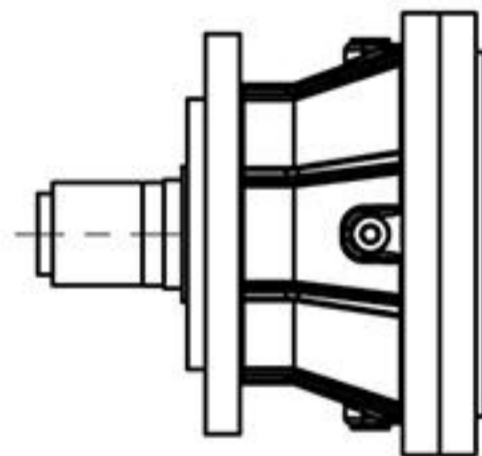


SH 510 ... MS

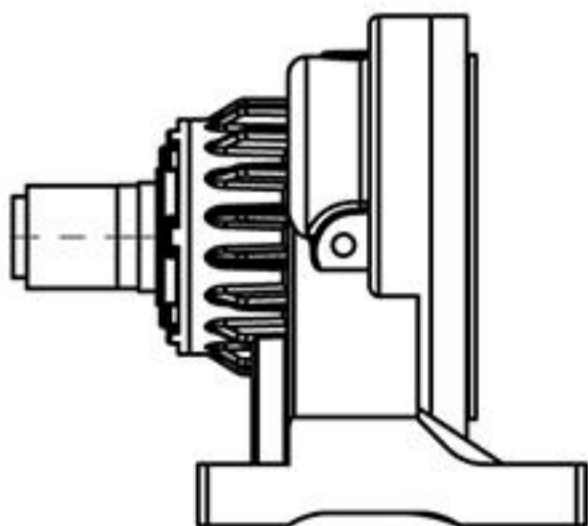


Bush S(I)510

SH 510 ... ME



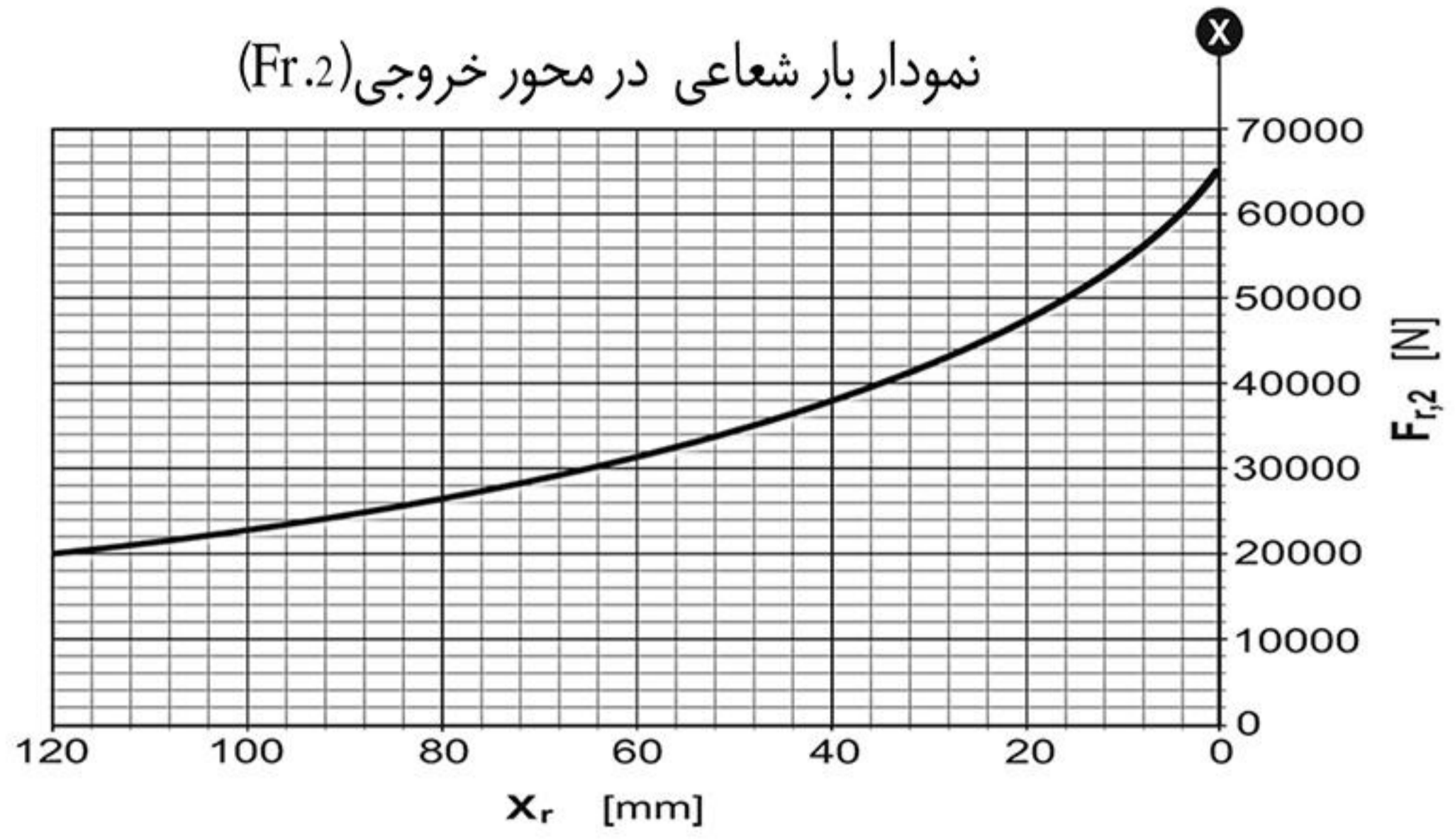
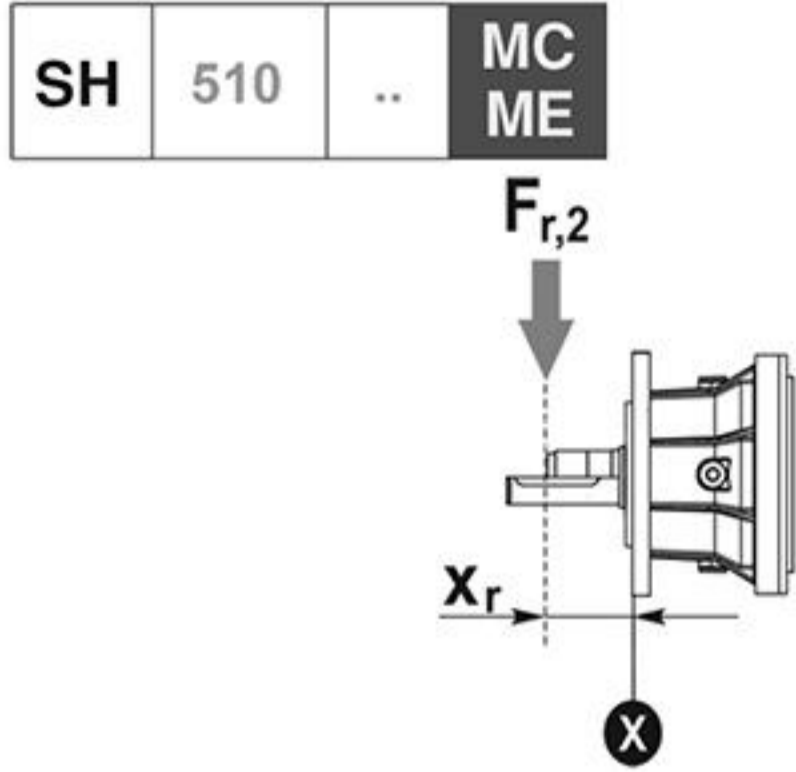
SH 510 ... UE



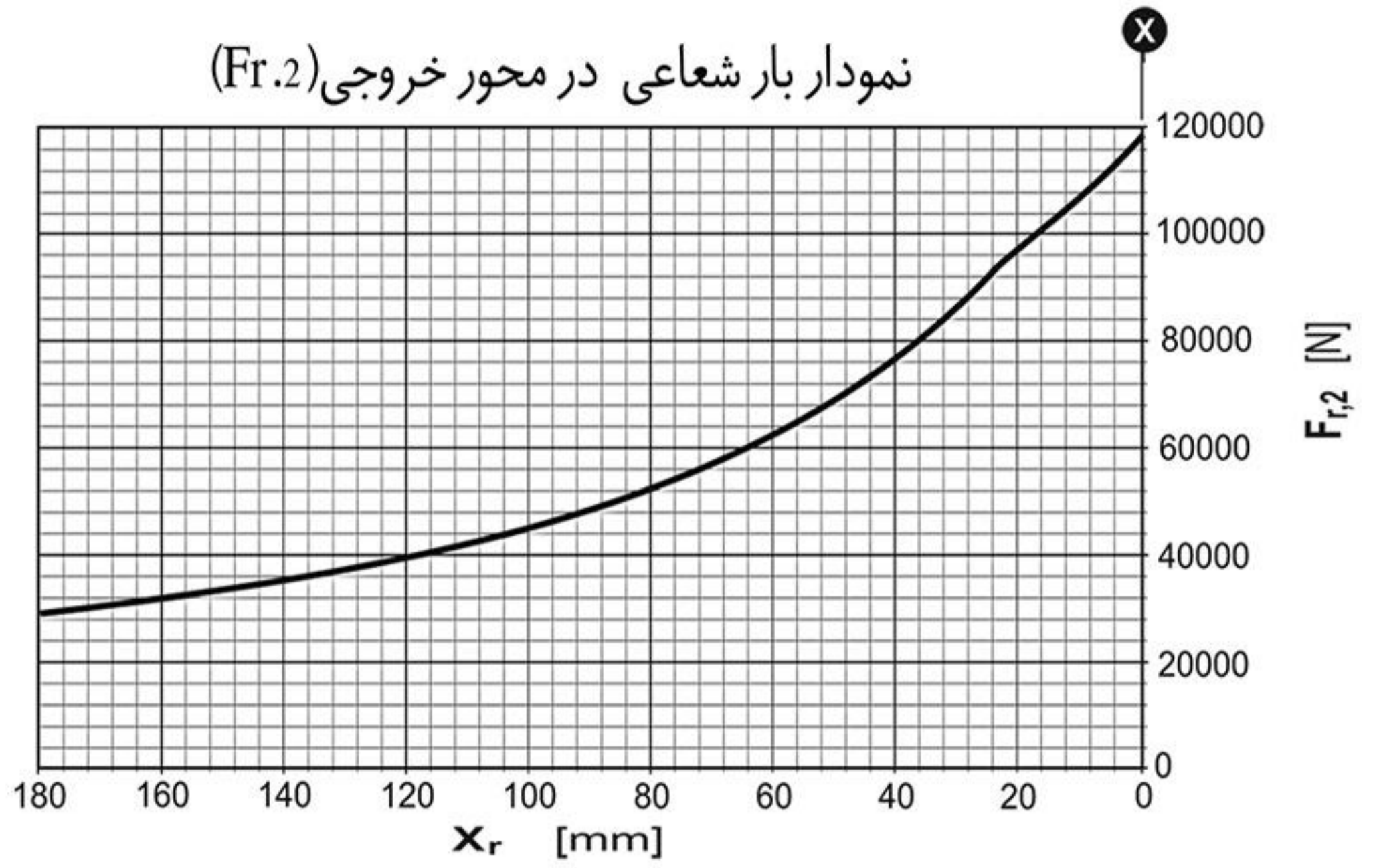
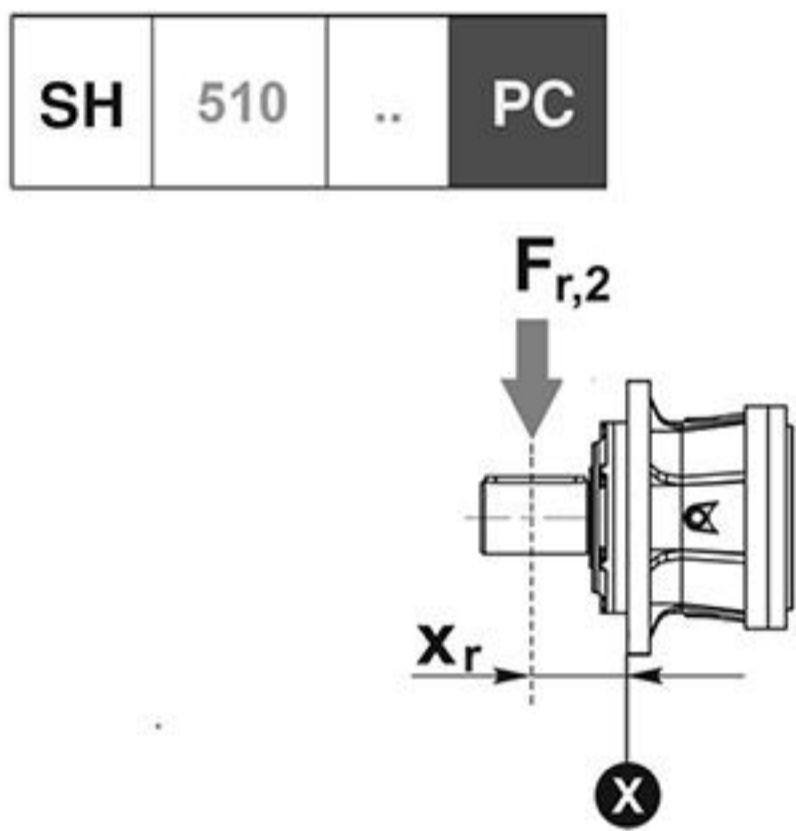


SH 510

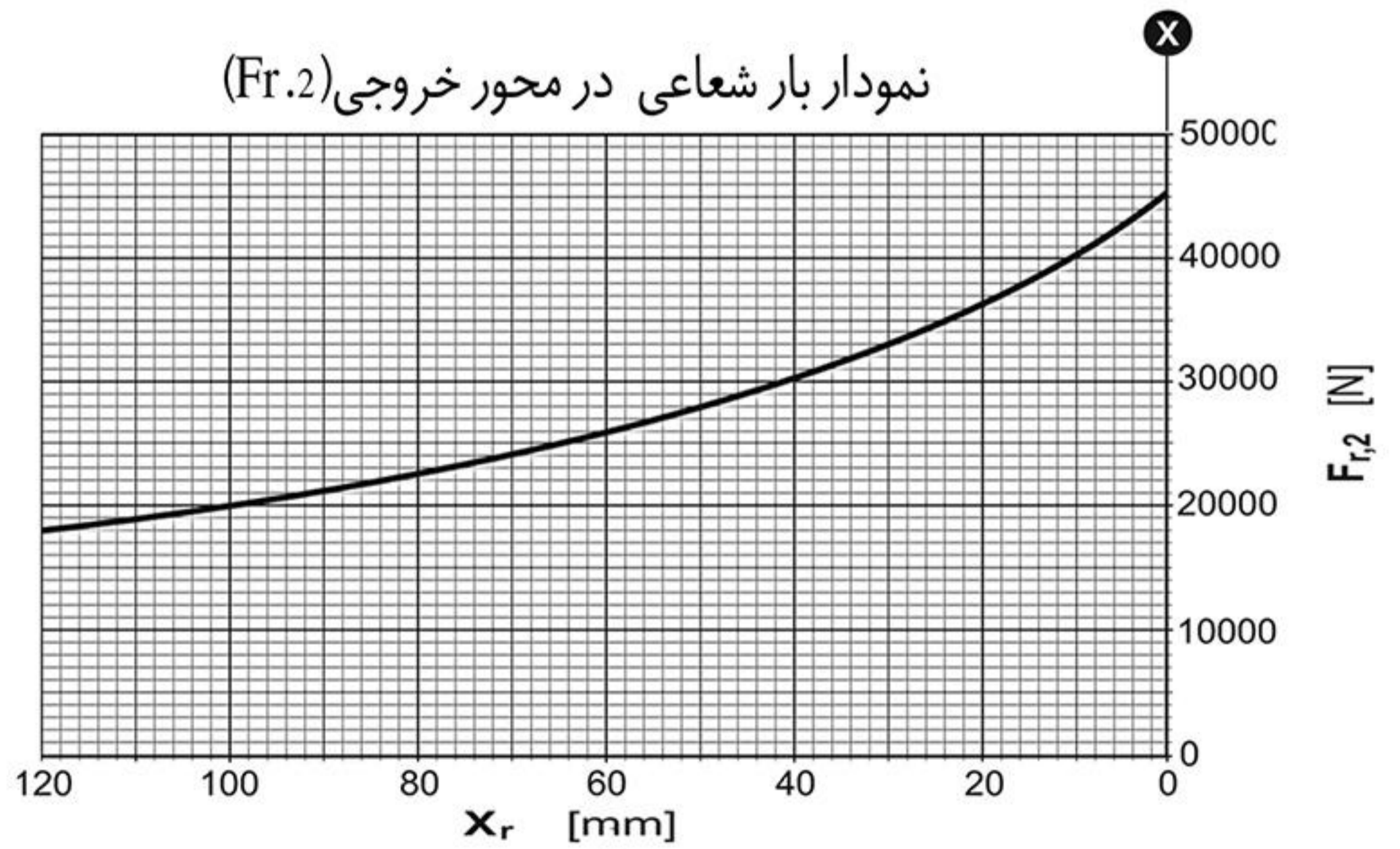
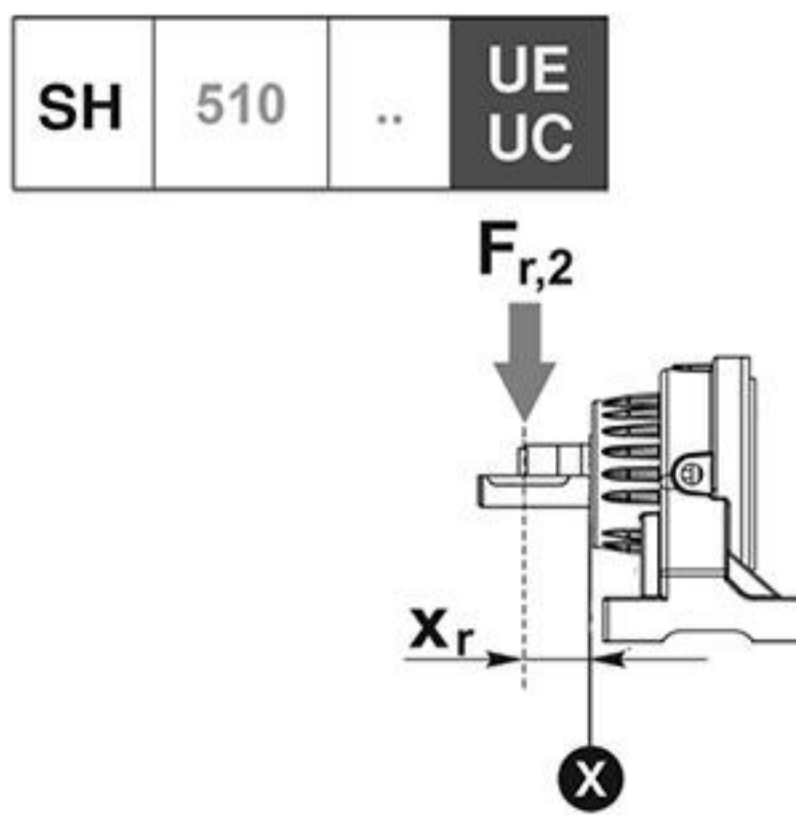
نمودار بار شعاعی در محور خروجی (Fr.2)



نمودار بار شعاعی در محور خروجی (Fr.2)

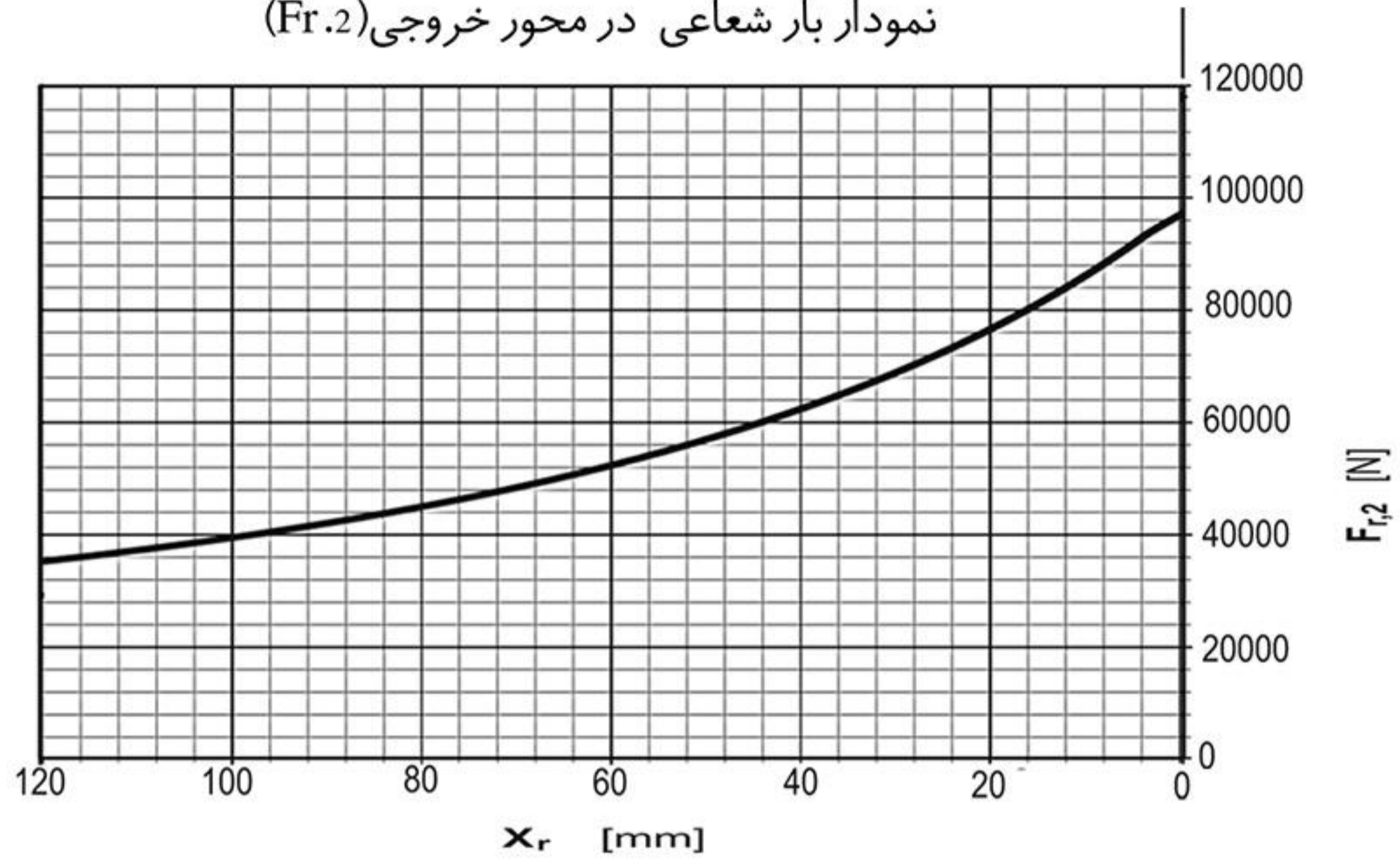
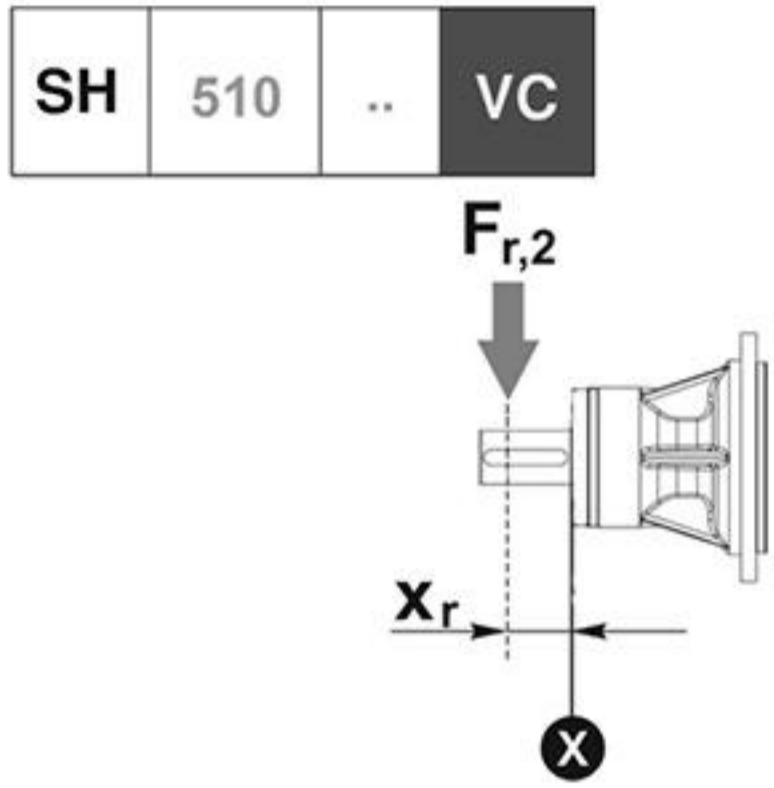


نمودار بار شعاعی در محور خروجی (Fr.2)

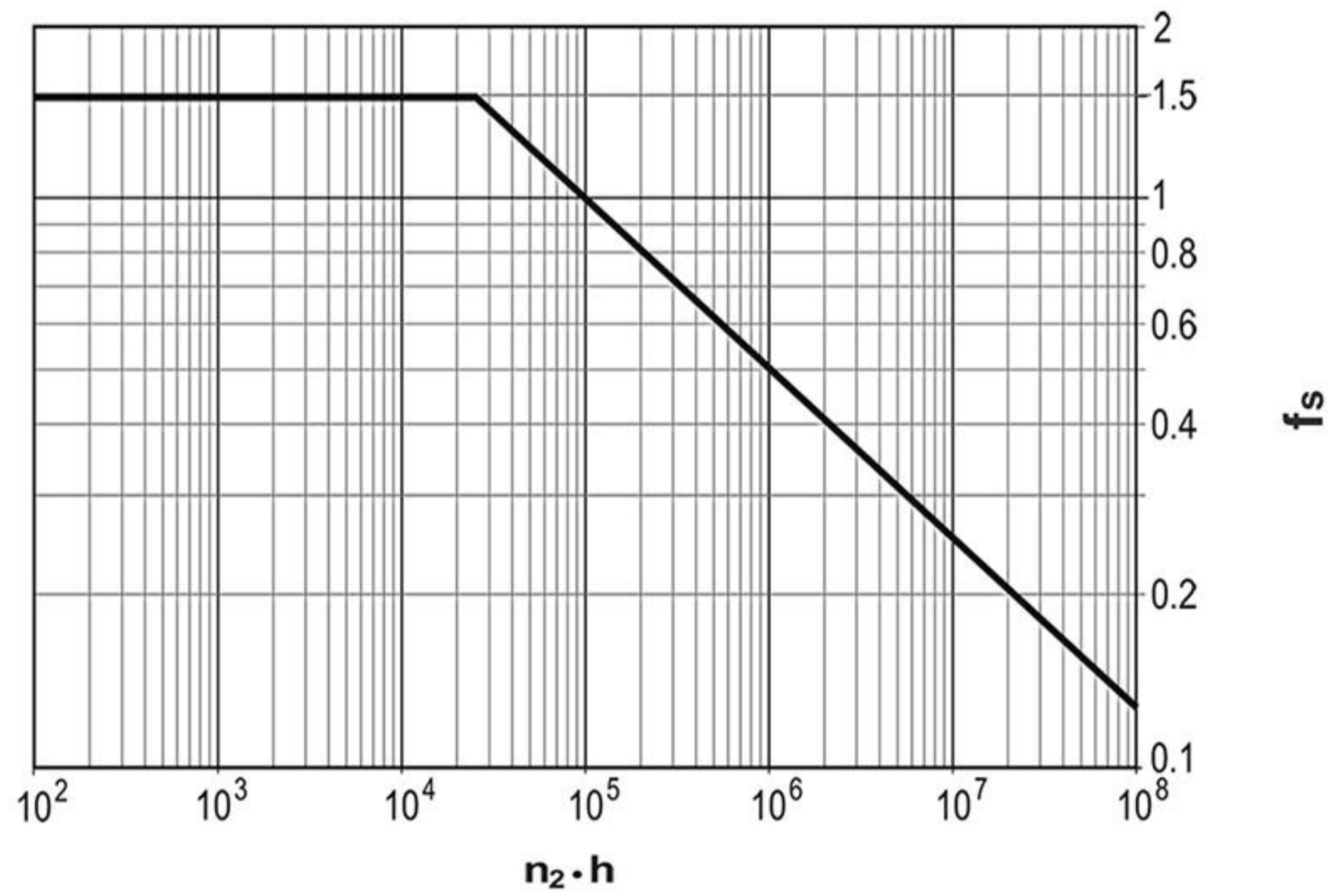
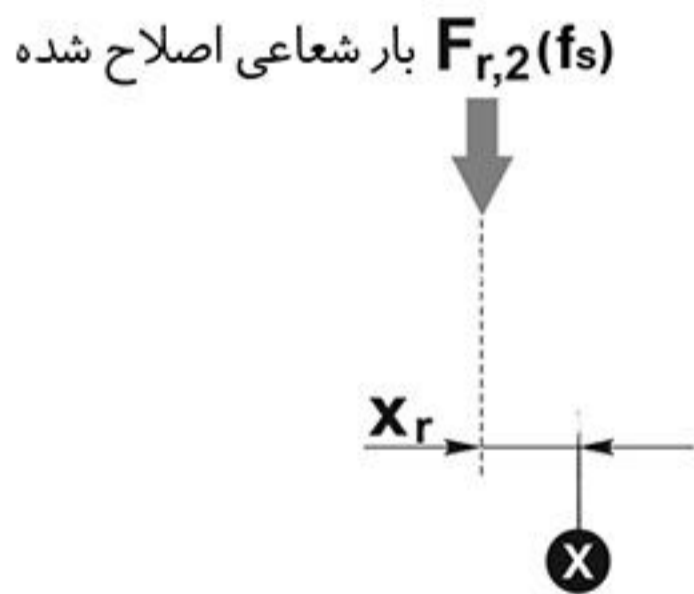




نمودار بار شعاعی در محور خروجی (Fr.2)



نمودار ضریب اطمینان بار شعاعی در محور خروجی



بار شعاعی اصلاح شده $F_{r,2}(f_s) = F_{r,2} \times f_s$



Shahbaz Gearbox Pishro Sepahan

شهباز گیربکس
پیشرو سپاهان

یادداشت :

A series of horizontal dotted lines for taking notes.

یادداشت :

Dotted lines for writing notes.